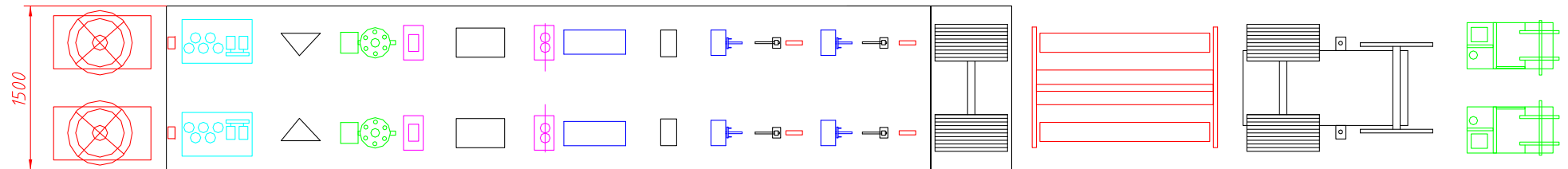
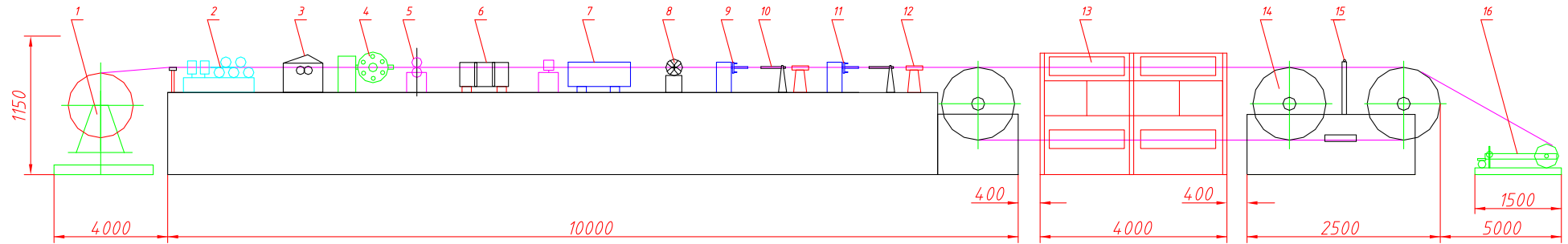


KAPTON TAPING MACHINE

(DESIGN SCHEME 2)

SF1 GLASS FIBRE / POLYIMIDE FILM COVERING AND SINTERING MACHINE

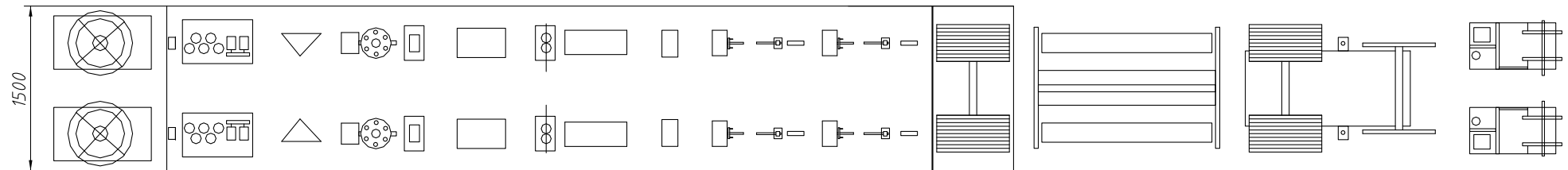
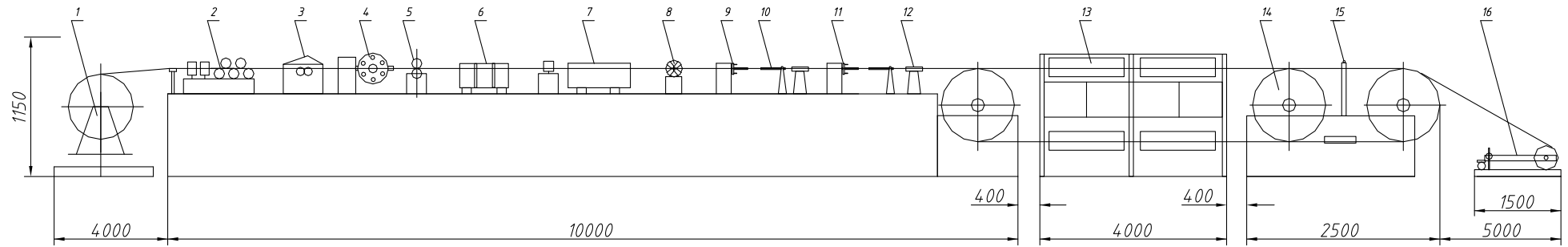


No.	Name	No.	Name	No.	Name
1	Pay off unit	7	Horizontal curing oven (On / Off type)	13	Curing oven
2	Straightening unit	8	Blower / dryer	14	Aluminium disc support
3	Buffing unit	9	2 sets of glass fibre taping head	15	Withstand voltage tester
4	Taping head for Kapton (polyimide film) covering	10	Wire guiding tube	16	Take-up unit
5	2 sets of nip rollers	11	2 sets of glass fibre taping head		
6	High frequency sintering induction heater	12	Lacquer tank		

KAPTON TAPING MACHINE

(DESIGN SCHEME 2)

SF1 GLASS FIBRE / POLYIMIDE FILM COVERING AND SINTERING MACHINE



No.	Name	No.	Name	No.	Name
1	Pay off unit	7	Horizontal curing oven (On / Off type)	13	Curing oven
2	Straightening unit	8	Blower / dryer	14	Aluminium disc support
3	Buffing unit	9	2 sets of glass fibre taping heads	15	Withstand voltage tester
4	Taping head for Kapton (polyimide film) covering	10	Wire guiding tube	16	Take up-unit
5	2 sets of nip rollers	11	2 sets of glass fibre taping heads		
6	High frequency sintering induction heater	12	Lacquer tank		

KAPTON TAPING MACHINE
(DESIGN SCHEME 2)
SF1 GLASS FIBRE / POLYIMIDE FILM COVERING AND SINTERING MACHINE

Technical Descriptions

1. There are 2 production lines for each machine;
2. There are 2 sets of payoff units;
3. There are 2 sets of horizontal straightening rollers and 2 sets of vertical straightening rollers, 1 set of buffing unit.
4. There are 2 polyimide film taping heads, and 4 glass fibre taping heads;
5. Frame is made of No.12 formed steel by welding;
6. Taping speed is 0~4.5 meter / minute, controlled by servo motor;
7. There is an automatic stop device for sudden breaking of glass fibre and film, and automatically stop the power supply of the curing oven and automatically open the cover of the curing oven;
8. The driving wheel is made of cast iron;
9. There are 8 grooves on the driving wheel, the width of each groove is 17mm;
10. The driven wheel is made of aluminium (lamination structure);
11. There are 8 curing ovens, the length of each curing oven is 1.5m;
12. There are 48 electric heating tubes, the power of each electric heating tube is 1kW;
13. Using the intelligent temperature control meter on the curing oven;
14. The take-up unit is driven by the torque motor, a polished bar is used for automatic taking-up, and removing the roller by hand;

P.S.

Special technical requirements, kindly please contact with us by email